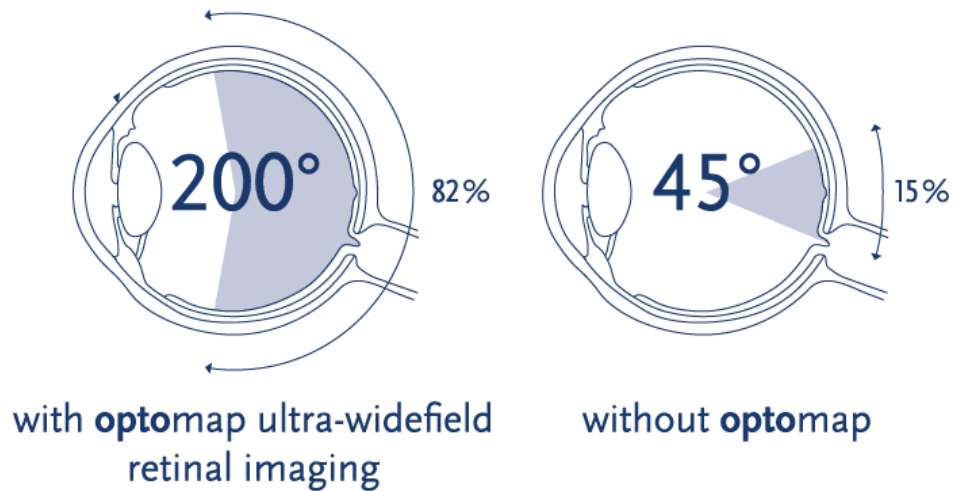


OPTOMAP RETINAL IMAGING

We are pleased to be able to offer the Optomap Retinal Image Exam, which allows our doctors to review an ultra-widefield view of the retina with minimal to no dilation. The retina is located in the back of your eye where many eye conditions occur, including macular degeneration, retinal detachment, and retinopathy from diabetes or hypertension. Early signs of these conditions can show on your retina long before you notice any changes to your vision or feel pain.



Getting an Optomap image is fast, painless, and comfortable. Nothing touches your eye and is suitable for the whole family. Optomap Retinal Images are required by our doctors each year with your eye exam, for the safety and benefit of our patients.

There is a small fee of \$39

Accept Decline Signature: _____